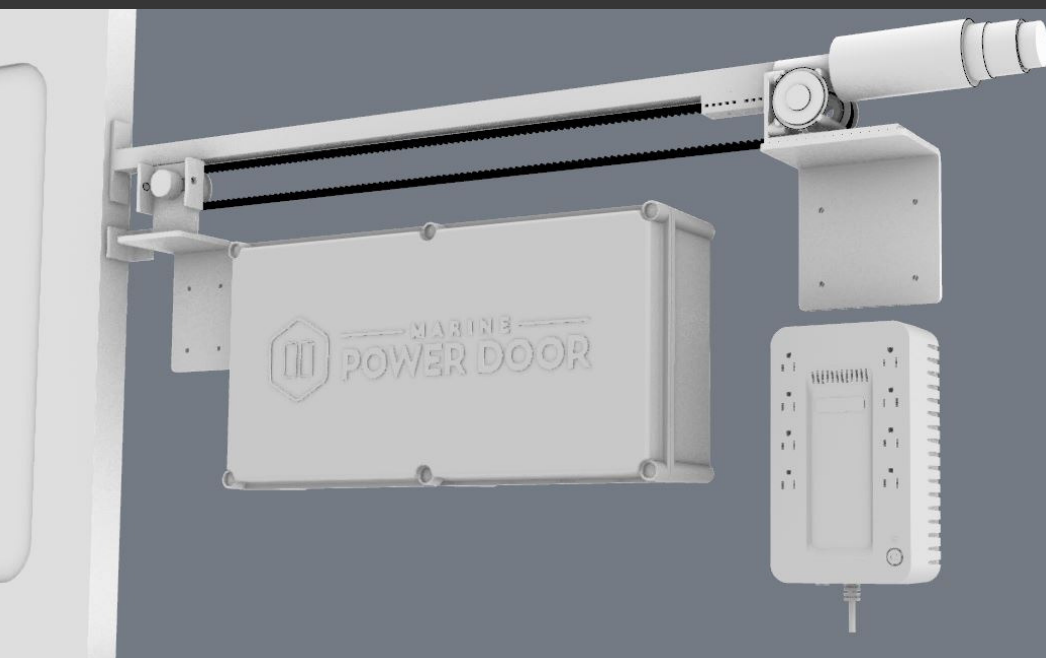


MARINE
POWER DOOR

by J.R. Beers Marine Service

Electric Door Operator System

- Electrical requirements: 120VAC, 10A (Battery backup included)
- Secure locking mechanism holds door open or closed in all sea conditions
- Safety switches allow ingress and egress at all times
- Obstruction detection and reversing ensure safety of crew
- Backlit waterproof key pad allows locking of vessel while away
- Interior lock switch ensures security during overnight stays
- Smooth and nearly silent belt-driven operation
- Compatible with most existing sliding doors
- Multiple installation configurations (port, starboard, overhead)
- Optional overhead track/carrier system available for custom doors



*Unsurpassed
Safety &
Reliability*